

SEASIDE INN BEACH RESORT

2200 Gulf Drive North
Bradenton Beach, FL 34217

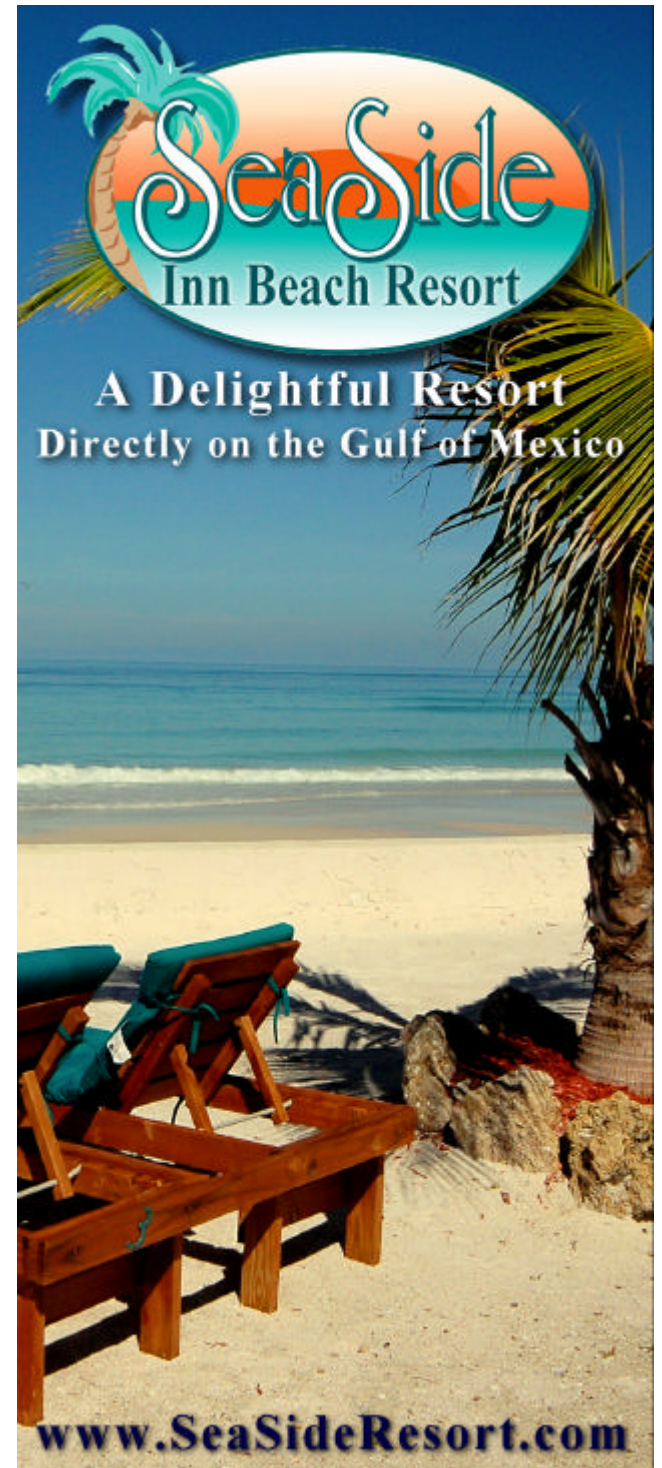
Reservations:
1.800.447.7124
941.778.5254

Fax:
941.778.4500

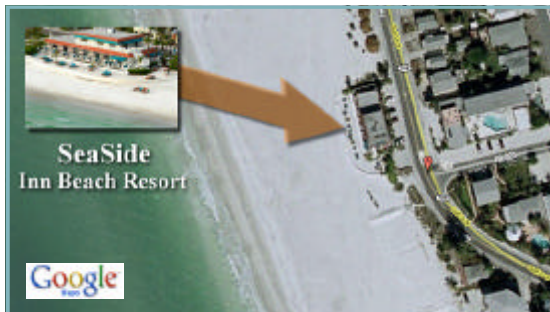
Website:
www.SeaSideResort.com

Award Winning Location

Anna Maria Island was selected by
Trip Advisor as America's #1 beach
vacation destination in 2007.



SeaSide Inn Beach Resort
2200 Gulf Drive North
Bradenton Beach, FL 34217



Directions

Take I-75 to Exit 220. Take Hwy 64 West to
Anna Maria Island. Turn Left at East Bay
Drive. Approx 1 & 1/2 miles on the right is the
SeaSide Inn Beach Resort

Place
Stamp
Here

www.SeaSideResort.com



WELCOME TO ANNA MARIA'S ESSENTIAL BEACH RESORT

NO SHOES REQUIRED - If you're dreaming of a relaxed vacation with Old Florida charm in a small resort with a private beach directly on the Gulf of Mexico - SeaSide Inn Beach Resort is the perfect choice for you. This delightful vacation resort is located on quaint Anna Maria Island on Southwest Florida's fabulous Sun Coast - "the last great place" - long on pleasure & short on high-rises, fast-food joints & those other pesky things that wreck a place (thankfully, there aren't any here to ruin the view).

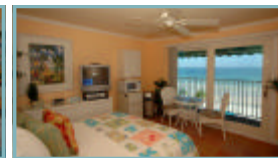
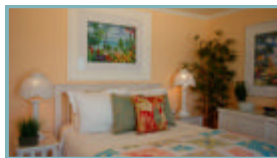
NATURE IN PROFUSION - SeaSide Inn Beach Resort has a private beach with fine white sand & clear blue seas, as well as sunsets so over the top they make you laugh in wonder. The beach is part of a nine-mile-long strand that extends from one end of Anna Maria Island to the other, perfect for long walks & collecting shells. Nature thrives here: flowers, flocks of seabirds, including pelicans & great blue herons, & all manner of exotic marine life (including our famous loggerhead turtles & gentle manatees).

AFFORDABLE LUXURY - SeaSide Inn Beach Resort's private beach is furnished with picnic tables, grills, umbrellas & lounge chairs; Beach towels are available, of course. All units, decorated in a relaxed tropical style, have direct Gulf and sunset views. Choose from one, two or three bedroom suites, studios with full kitchenettes, & cozy rooms. All apartments have private patios, free local/long-distance phones, Wi-Fi, cable TV & HBO. Morning coffee & tea are available, as are local newspapers.



Gulf Front Studio

All Gulf-front studio apartments include a king-size bed, sleeper-sofa & fully equipped kitchens – including a refrigerator, microwave, toaster and coffee maker. These cozy apartments sleep up to four & include large, private dining/sunning patios with table & chairs – opening directly onto the Gulf of Mexico's white sand beach.



Gulf Front Room

All charming Gulf-front rooms include a queen-size bed & fully equipped kitchenettes – including small refrigerators, microwaves, coffee makers and toasters. A large sunning/dining terrace is available with spectacular Gulf of Mexico sunsets. These rooms sleep two.



Gulf Front Penthouse Suite

This spacious one-bedroom penthouse apartment is a perfect romantic hide-away – with a private, sunning/dining patio & sweeping sunset views over the Gulf of Mexico. Everything is included, including a large living room with South & West beach views, a fully equipped large kitchen opening onto a large dining area, tropical furnishings throughout, including a sleeper sofa & a large screen TV/VCR. A large bedroom includes a king-size bed & a large TV. This apartment sleeps up to six people.



Please visit our Website for Virtual Tours, Photo Gallery and more information ...

www.SeaSideResort.com